



Plot No. 23, Near Sha Petroleum (Ipol),
Sativali Road, Valiv Phata, Vasai Road (E),
Dist. Palghar, Maharashtra, India - 401208.

Telefax: +91 250 6630200
E-mail: info@aneyafoundries.com
Website: www.aneyafoundries.com



DISCLAIMER:
Information and photographs in this catalogue are property of Aneya Foundries Private Limited. Products names, logos, brands and other trademarks featured or referred to within this document are the property of their respective trademark holders.



**ANEYA
FOUNDRIES
PVT. LTD.**

**MANUFACTURERS OF NON-FERROUS
CENTRIFUGAL CASTINGS**

**THE SPECIALIST IN
CENTRIFUGAL CASTINGS**



www.aneyafoundries.com

THE COMPANY

MARCHING towards
an **INNOVATIVE**
tomorrow



Aneya Foundries Pvt Ltd is an ISO 9001:2008 certified newly established foundry founded in 2013, manufacturing high quality Non-Ferrous Centrifugal Castings. The castings manufactured in our foundry conform to international standards such as IS, BS, SAE, DIN & ASTM or even to special grades as per clients specifications and requirements. The foundry is professionally managed by qualified personnel who have foundry experience & expertise to meet the customer demands.

An ISO CERTIFIED company

ISO 9001:2008 QUALITY
ISO14001:2004 EMS
ISO18001:2007 OHSAS

**Specialist in Centrifugal
Castings from 20kgs -
3000kgs in weight, 100mm
- 1000mm in diameter upto
4000mm long.**

Our foundry unit is supported by a testing laboratory including spectrometer to ensure the correct chemical composition. We also have machines to check the physical properties of products in-house viz. Universal Tensile Machine (UTM) for tensile strength & Brinell Hardness Tester for the hardness.

The unit has its own machine shop with various sizes of lathes to offer fully finished casting to our customers.

We have already manufactured castings for the marine and industrial applications and offer third party inspection including various classification societies to our customers.

Apart from the above, we also have a separate warehouse maintaining stock of various alloys to deliver finished products to our customers, thus ensuring better delivery.

QUALITY POLICY

**To provide our
clients quality
service on time,
every time.**

- C** Continuous improvement in quality.
- A** Alignment of our quality policy & objectives.
- R** Responsibility and respect for our job and other.
- E** Educating each other.

Our aim is to achieve, sustain and enhance customer satisfaction by continually improving the effectiveness of quality management system through teamwork and involvement of all members of our organization.

THE ADVANTAGES OFFERED BY THE CENTRIFUGAL CASTING PROCESS ARE:

- Dense & even micro structure (No Porosity)
- Radial & uniform grain flow
- Better Tensile Strength
- Hardness is more & uniform
- Withstands Impact Loading
- Excellent Surface Finish
- Better Life

INDUSTRIES THAT WE SUPPLY TO:

- **SHIPBUILDING/SHIP-REPAIR**
 - Propeller Shaft Sleeves
 - Propeller Shaft Carriers
 - Rudder Sleeves
 - Rudder Carriers
 - Stabilizer Sleeves
 - Stabilizer Carriers
 - Castings for Deck Equipments
- **DEFENSE**
- **NUCLEAR**
- **POWER PLANTS**
- **HYDRO**
- **WIND TURBINE INDUSTRIES**
- **FORGING COMPANIES**
- **VALVES AND PUMPS INDUSTRIES**
- **GEARBOX & MATERIAL HANDLING EQUIPMENTS**
- **ROTATING EQUIPMENT MANUFACTURERS**

FOUNDRY APPROVED BY



CLASS IRS



CLASS LRS

INFRASTRUCTURE



FOUNDRY

Metallurgy & Production

MACHINE SHOP

For In house Proof Machining or Fully finished Castings

LABORATORY

In house Quality Checks & Control

ADMINISTRATION

Logistics, Accounts, Stores & HR

TOTAL FACTORY AREA

15,000 sq. feet

WORKFORCE

50 People

MACHINE SHOP

The unit has full-fledged machine shop with multiple Lathes to offer Proof machined or Fully finished castings to our Customers. We can handle Casting of various sizes ranging from 100mm to 1000mm in diameter upto 4000mm long. We have CNC machining center to machine the castings to close tolerances & Honing machining center to provide high surface finish.



MELTING & CASTING

MELTING AREA - FURNACES

- 125 - 250 - 450 - 1500- 3000 Kgs.

CENTRIFUGAL CASTING MACHINE

- Finished weight of casting 2100 kgs.
- Max Length of 4mtrs & dia 500mm. (Dia will increase with reduction in length)
- Max dia 1000mm length 1000mm

HORIZONTAL MACHINES - 4 NOS.

CANTILEVER MACHINE - 1 NO.

VERTICAL MACHINE - 1 NO.

- CHEMICAL ANALYSIS (IN HOUSE SPECTROMETER)
- MECHANICAL TESTING (IN HOUSE UTM)
- HARDNESS TESTING (IN HOUSE HARDNESS TESTER)
- DYE/LIQUID PENETRANT EXAMINATION (LEVEL 2 QUALIFIED MANPOWER)
- PRESSURE/HYDRAULIC TESTING (IN HOUSE TEST BENCH)
- ULTRASONIC TESTING & RADIOGRAPHY TESTING (ON REQUEST)
- OUTSIDE WITNESS (3RD PARTY) INSPECTION AVAILABLE
- FOUNDRY APPROVED BY CLASS IRS & CLASS LRS

LABORATORY TESTING & INSPECTION

FACILITIES WE HAVE



SPECTROMETER



UNIVERSAL TESTING MACHINE

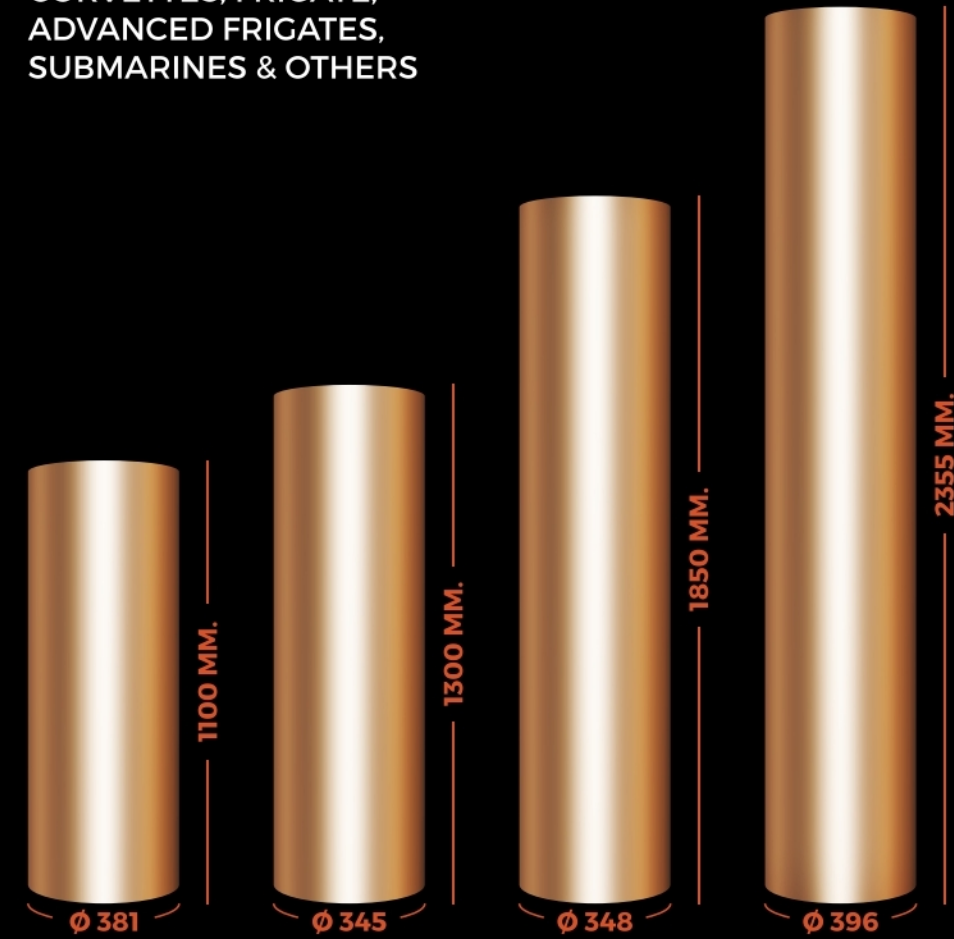


WET ANALYSIS LAB

DEFENSE

PROPELLER SHAFT SLEEVES FOR VARIOUS CLASS SHIPS

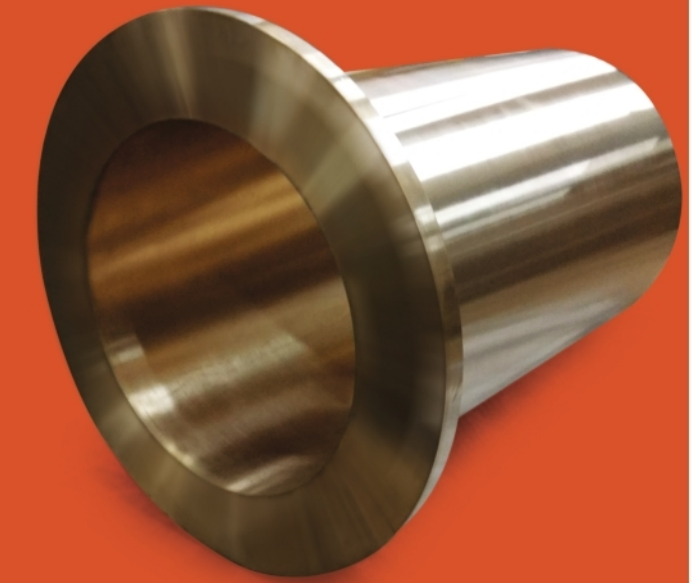
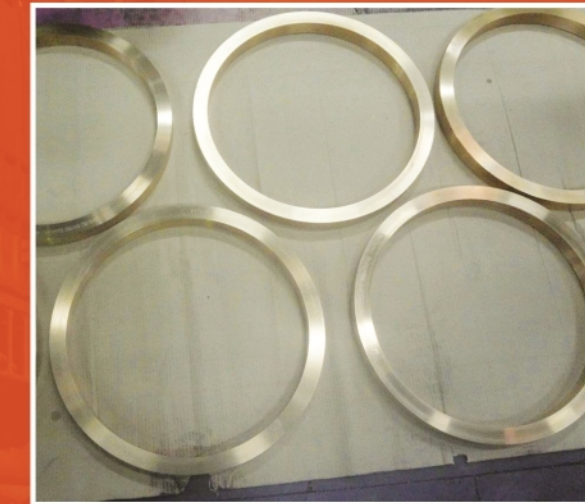
CORVETTES, FRIGATE,
ADVANCED FRIGATES,
SUBMARINES & OTHERS



SHIPBUILDING /
SHIP-REPAIR

MANUFACTURERS OF
PROPELLER SHAFT
SYSTEMS, RUDDER /
STEERING SYSTEMS &
DECK EQUIPMENT ETC.

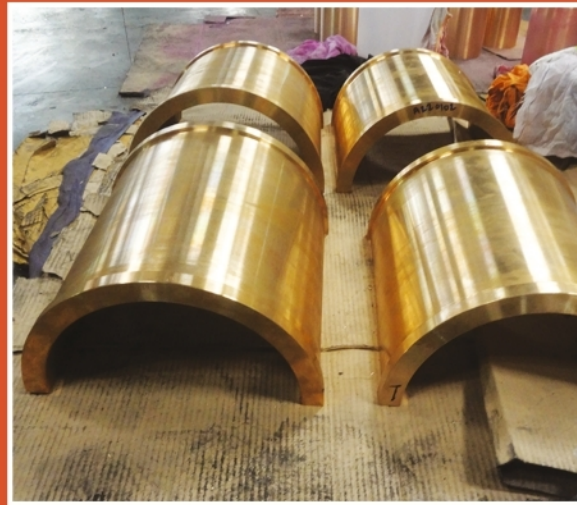
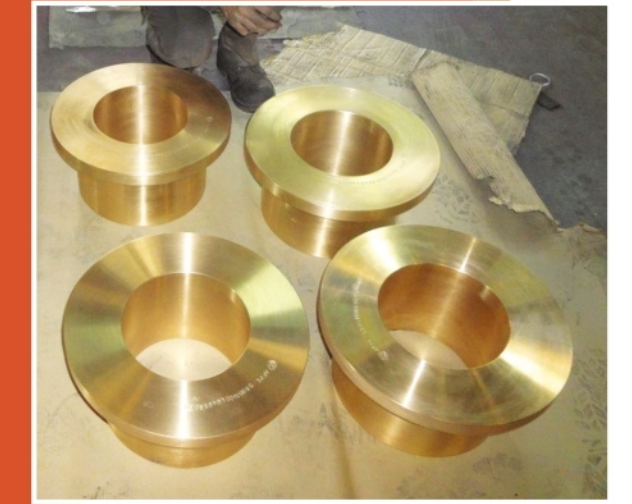
CARRIERS / BEARING HOLDERS,
LINERS/SLEEVES, BEARING BUSHES ETC.



**NUCLEAR, HYDRO,
WINDFARM & OTHERS**

CENTRIFUGAL CASTING OF:

- TIN BRONZE
- PHOSPHOR BRONZE
- ALUMINIUM BRONZE
- GUN METALS
- ANY OTHER ALLOYS OF COPPER
AS PER CUSTOMER SPECIFICATION



ACHIEVEMENT & MILESTONE

2017

- First Export order from European OEM
- Aneya Foundries approved by GE
- Order from Indian Navy

2016

- Order for NOPVs
- Order from Indian Navy

2016

- Order for Bridging systems
- Received Foundry Approval from Class LRS

2015

- Participation in INMEX-SMM & DEFENSE Exhibitions
- Received Foundry Approval from Class IRS
- Order received for Nuclear Power plant castings

2014

- AFPL received ISO Certifications
- ISO 9001:2008 QUALITY • ISO 14001:2004 EMS
- ISO 18001:2007 OHSAS

2013

- Aneya Foundries was established at Vasai, Maharashtra in India

SEGMENTS



**SHIPBUILDING /
SHIP-REPAIR**



DEFENSE



NUCLEAR



OEMs



HYDRO



OTHER